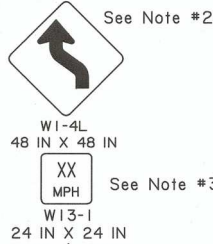


SPEED LIMIT (prior to construction)	SPACING				
	'A'	'B'	'C'	'D'	'E'
≤ 40 mph	60 FT	60 FT	80 FT	100 FT	N/A
45-50 mph	425 FT	150 FT	425 FT	500 FT	100 FT
≥ 55 mph	1950 FT	200 FT	1950 FT	1000 FT	150 FT

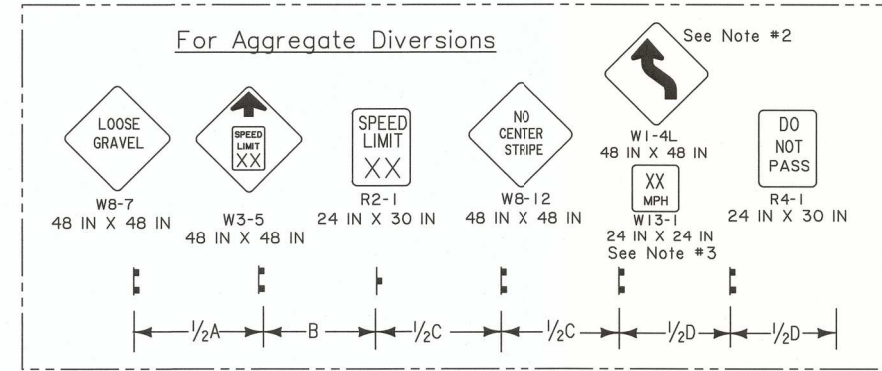
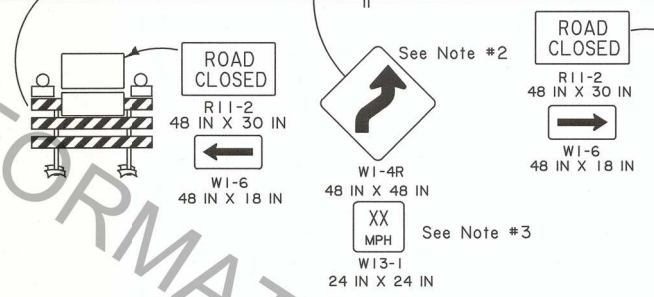
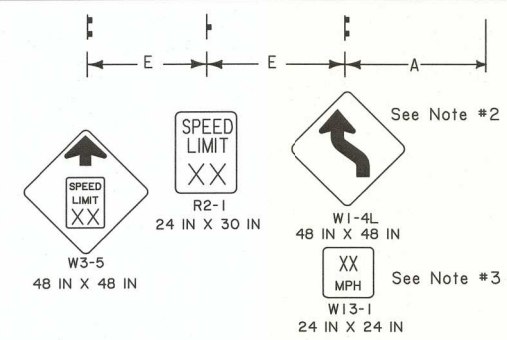
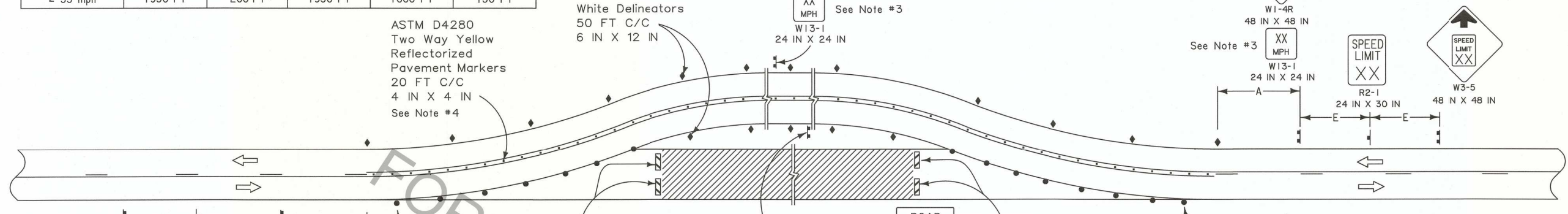
ASTM D4280
Two Way Yellow
ReflectORIZED
Pavement Markers
20 FT C/C
4 IN X 4 IN
See Note #4

White Delineators
50 FT C/C
6 IN X 12 IN



SEE TTC-00(A), TTC-00(B), TTC-00(C), AND TTC-00(D)

- LEGEND**
- Traffic Sign
 - Channelizing Devices
 - Type III Barricades
 - Single White Delineators (6IN X 12 IN)
 - ReflectORIZED Pavement Markers
 - Type B Light
 - Direction of Travel



NOTES

This sheet shall be used with the Temporary Traffic Control General Notes Sheets TTC-00(A), TTC-00(B), TTC-00(C), and TTC-00(D).

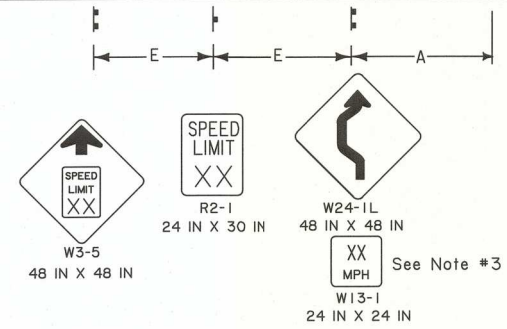
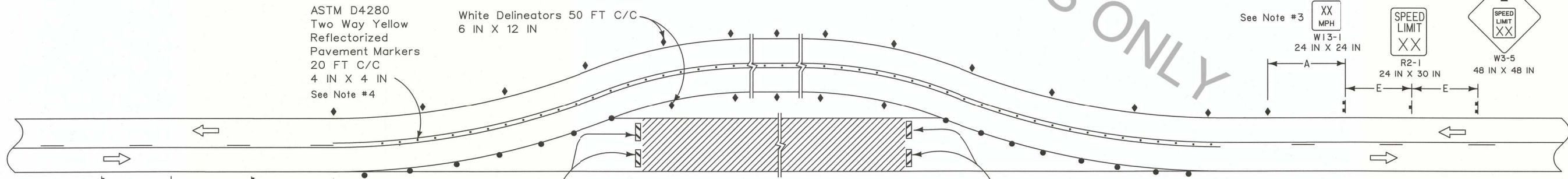
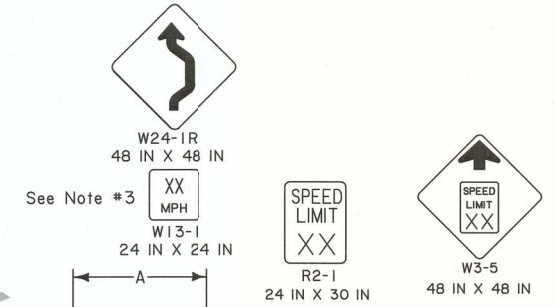
- This layout represents the minimum traffic controls required for a paved or aggregate diversion. For advance signing see TTC-00(D).
- If advisory speed is less than 35 mph, the reverse curve signs (W1-4L or W1-4R) will be changed to reverse turn sign (W1-3L or W1-3R).
- Advisory speed plaques (W13-1) shall be required if the difference between the speed limit prior to construction and the advisory speed (determined by an engineering study performed by the DTOE) is 10 mph or greater.

- Paved Diversions shall be striped with double yellow solid lines and raised pavement markings as per LADOTD Pavement Marking Standards.
- Aggregate Diversions shall include "Do Not Pass" (R4-1) signs, "Loose Gravel" (W8-7) signs, and "No Center Stripe" (W8-12) signs and either supercones or flex posts to delineate the centerline.

For tangent distances along the diversion less than or equal to 600 FT

ASTM D4280
Two Way Yellow
ReflectORIZED
Pavement Markers
20 FT C/C
4 IN X 4 IN
See Note #4

White Delineators
50 FT C/C
6 IN X 12 IN



ALL TTC STANDARDS SHOW MINIMUM CONSTRUCTION SIGNING.
ALL SITUATIONS SHALL BE REVIEWED AND/OR DESIGNED BY THE ENGINEER.
CONTRACTORS ARE RESPONSIBLE FOR COMPLYING WITH ALL TTC STANDARDS.

SHEET NUMBER: _____

DESIGNED BY: G. LEBLANC
CHECKED BY: J. COLVIN
DATE: 7/2/18

PARISH: _____ CONTROL SECTION: _____ STATE PROJECT: _____

REVISION OR CHANGE ORDER DESCRIPTION: _____

DATE: _____

APPROVED BY: _____

TRAFFIC ENGINEER: _____

STATE OF LOUISIANA REGISTERED PROFESSIONAL ENGINEER IN CIVIL ENGINEERING
GARY N. LEBLANC REG. NO. 25220

TEMPORARY TRAFFIC CONTROL FOR ON SITE DIVERSION WITH TWO-WAY TRAFFIC

TTC-05

DOTD TRAFFIC ENGINEERING